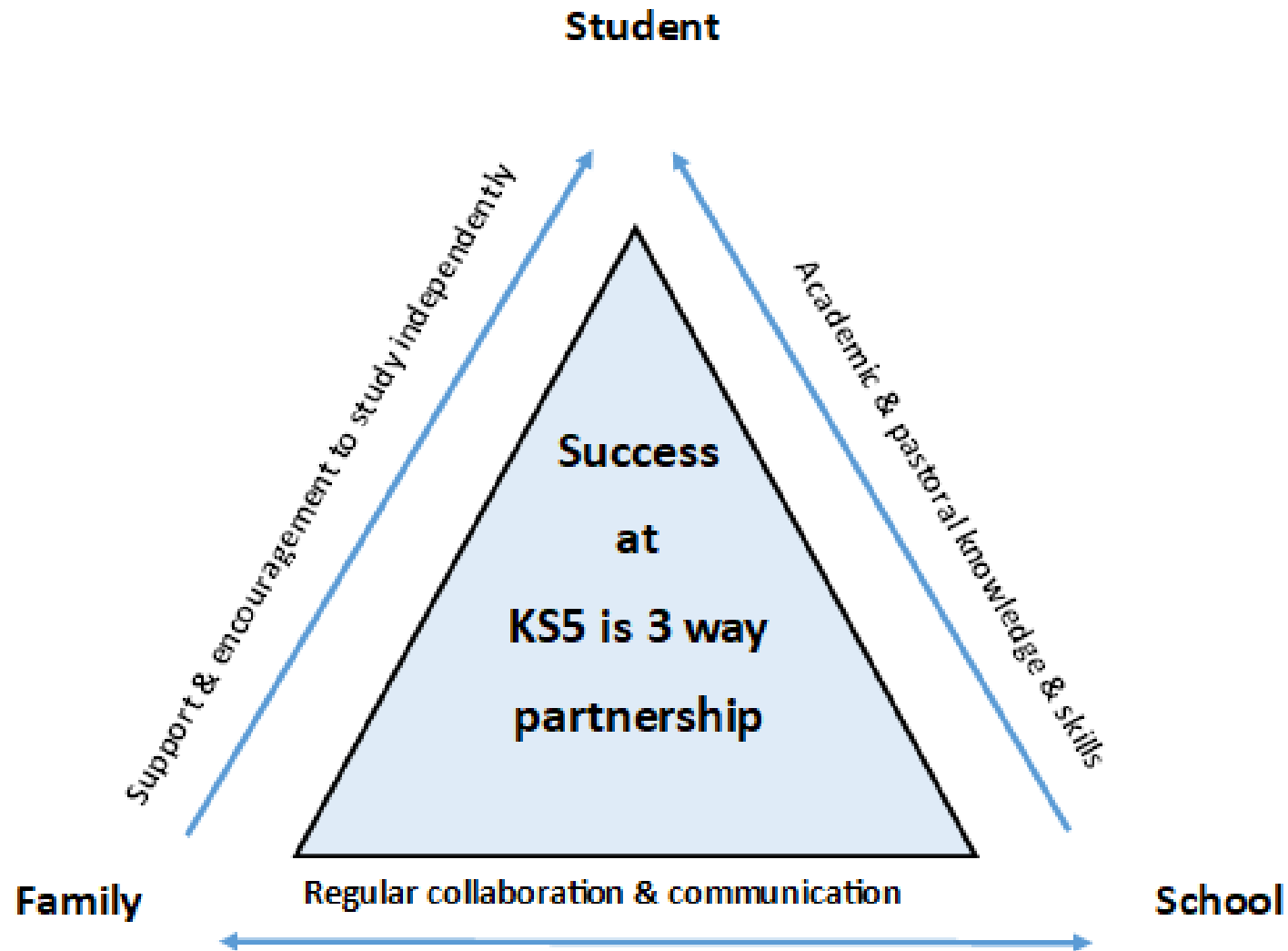




Welcome to Key Stage 5  
Information &  
Expectation Evening  
2023

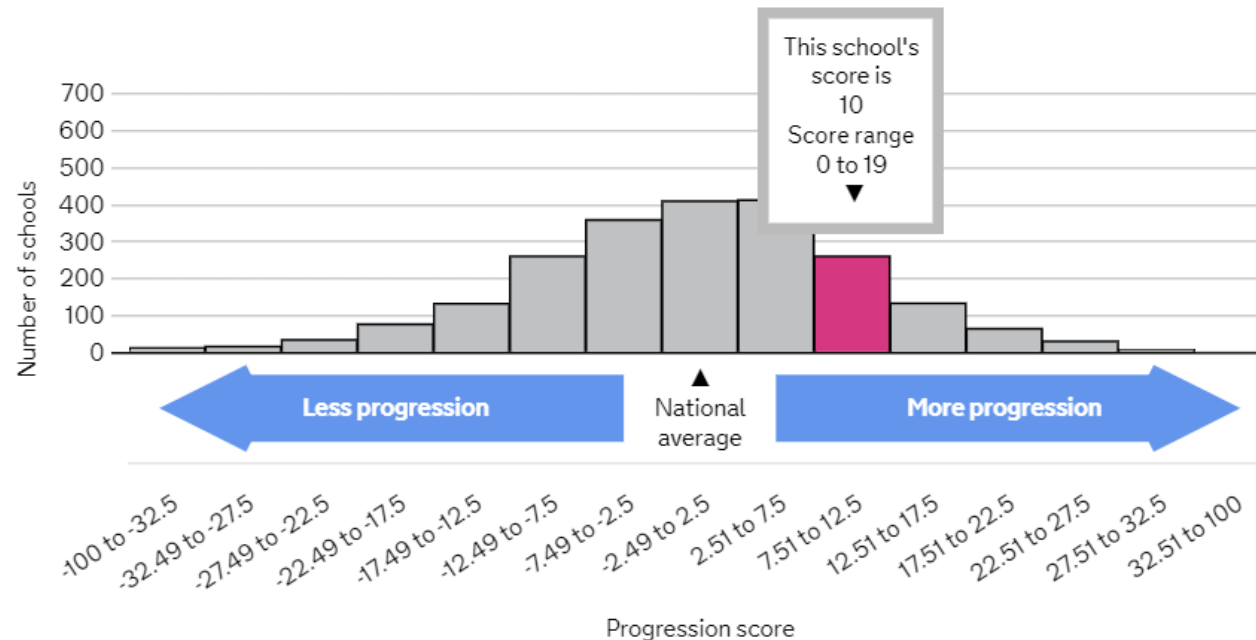




# excellent outcomes, above National and Local averages

## Progression score ?

This score tells you the proportion of students from this school or college that go on to degrees, higher apprenticeships or other study at level 4 or above after leaving advanced level qualifications (level 3), taking prior attainment into account.



# excellent outcomes at the end of Y13

Destinations after 16 to 18	School / college	Local authority	England
Degrees ?	85%	59%	62%
of which are top third higher education institutions ?	32%	16%	17%
of which are Russell Group institutions ?	28%	15%	15%
of which are Oxford or Cambridge	1%	1%	1%

APPRENTICESHIPS & COLLEGE COURSES

Teaching Assistant – St John’s Primary School

Activate Banbury – Sports Science

UNIVERSITY CHOICES

University of Liverpool – Nursing, Psychology

Liverpool John Moores University – International relations and Politics

University of Derby - Psychology

University of Birmingham – Master of Nursing

Aston University – Electrical and Electronic Engineering

University of Worcester – Creative Writing and History

University of Warwick – Psychology

University of Gloucestershire – Business and Management

De Montfort University – Medical Science

Coventry University – Aerospace Technology, Psychology, Computer Science with AI

Aberystwyth University – Spanish and American Studies, Politics and Modern History

Bath Spa University – Criminology and Psychology

Cardiff University - History

Cardiff Metropolitan University – Food Science and Nutrition

University of Bristol – Theatre and English

Blessed George Napier  
RC School & Sixth Form  
Year 13 Destinations  
September 2023



OPEN UNIVERSITY

Modern Foreign Languages - Spanish

Engineering

UNIVERSITY CHOICES

University of Aberdeen – French studies

Durham University – Natural Sciences, Law

University of Hull – Geography

University of Lincoln – Economics

Keele University – Pharmacy, Nursing, Law, Biomedical science, Accounting and Finance

Nottingham Trent University – Sports management, Fashion marketing and branding, Cyber security, Sports science and management, Economics, Computer science

University of Leicester – Nursing with Leadership

University of Oxford – Italian and Spanish

Oxford Brookes University – Criminology

University of Reading – Art and History of Art, Architecture

University of Surrey, Midwifery, Computer science

University of Sussex – Geography

University of Southampton – Accounting and Finance, Geography

University of Bournemouth – Sport and Exercise Science 2024

# excellent outcomes at the end of Y13

## Student destinations after 16 to 18 (2020 leavers)

Students reaching the end of 16 to 18 study in 2020 and staying in education or employment for at least 2 terms after this. This is provisional data published in October 2022.

► [More info](#)

### Students progressing to education or employment

**Total number of students: 67**



the opportunity to resit Maths and/or English GCSE to achieve above 4

Old grades	New grades
A*	9
A	8
B	7
C	6
	5 Strong Pass
	4 Standard Pass
D	3
E	2
F	1
G	



# PSHE programme delivered by dedicated 6<sup>th</sup> form tutors

Year group	Sept to Dec	Jan to early March	March to Easter	Easter to May	May to July
12	Health & Wellbeing  Study skills for 6 <sup>th</sup> form	Digital Literacy & staying safe online  Risk taking behaviours Inc. substance abuse	Sexual Health and Relationships  Risk taking behaviours Inc. substance abuse	Sexual Health and Relationships  Preparing for mock exams  Equality, Diversity, and Inclusion	Careers and Further Education guidance  Personal Safety
13	Careers and Further Education guidance  Preparing for exams, Inc.: managing stress, revision techniques	Money Matters  Healthy Relationships & Staying safe in a relationship	Equality, Diversity, and Inclusion  Continued Friday	Getting Ready for the next stage  Personal Safety	Study leave  Study leave

# opportunities to experience the wider world & develop transferable skills



ENRICHMENT  
OPPORTUNITIES



WORK  
EXPERIENCE



THE LOURDES  
PILGRIMAGE



DUKE OF  
EDINBURGH



SUMMER  
SCHOOLS

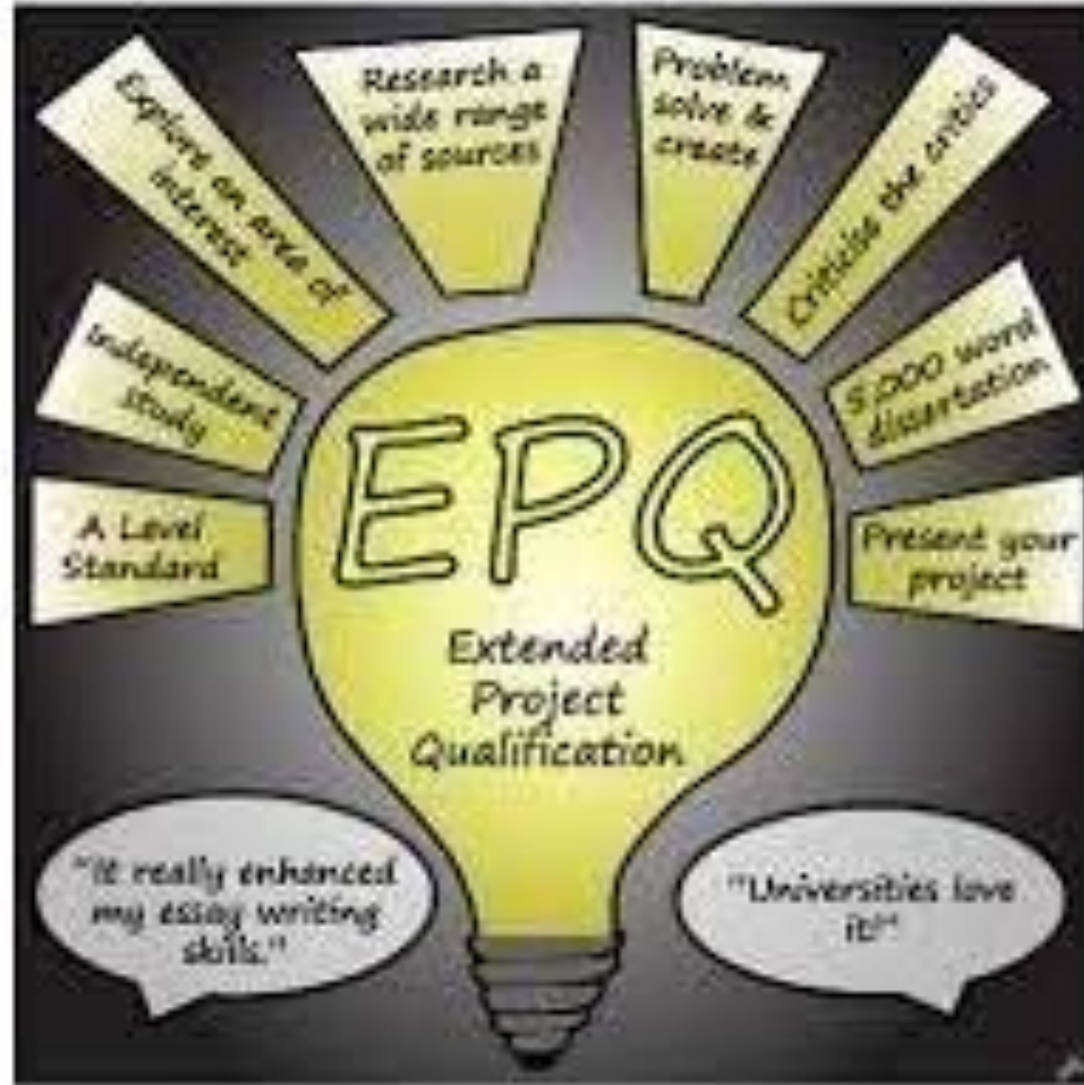


THE PATHWAYS TO  
... PROGRAMME



LECTURES

the chance to do an EPQ




# regular communications: The KS5 Bulletin & Website & e mails

Unifrog - The universal destination x Blessed George Napier Catholic x +

blessedgeorgenapier.co.uk/page/?title=6th+Form&pid=293

Gmail YouTube Maps OTSA - ECT Paperle...

 **Blessed George Napier Catholic School**

HOME ABOUT US JOIN US CATHOLIC LIFE OUR CURRICULUM 6TH FORM OUR SCHOOL CONTACT US ONLINE SHOP

WEEK B → POPE FRANCIS MAC

WHAT IT'S LIKE TO BE A SIXTH FORMER AT BGN

6TH FORM CURRICULUM

JOIN OUR SIXTH FORM

REGISTER YOUR INTEREST

CAREERS INFORMATION, ADVICE, AND GUIDANCE IN KEY STAGE 5

DESTINATIONS

16-19 BURSARY

KEY STAGE 5 BULLETINS 2022-2023

DRESS CODE AND CODE OF

HOME → 6TH FORM

**6th Form**

https://www.blessedgeorgenapier.co.uk/page/?title=6th+Form&pid=293

Type here to search

13:00 12/09/2023

# VESPA in Y12

## The A Level Mindset

[HOME](#)[CONTACT](#)[VESPA MODEL ▾](#)[VESPA PRODUCTS ▾](#)[SIGN IN](#)

## THE VESPA MODEL

The VESPA model is based around 5 key components to student success, providing a framework for students to develop study skills.



VISION



EFFORT



SYSTEMS



PRACTICE



ATTITUDE



# My Super curricular in Y13

University and apprenticeship applications have become more and more competitive. A comprehensive super curricular portfolio, showcased in both the personal statement and references, is now an essential prerequisite when applying.

Online courses

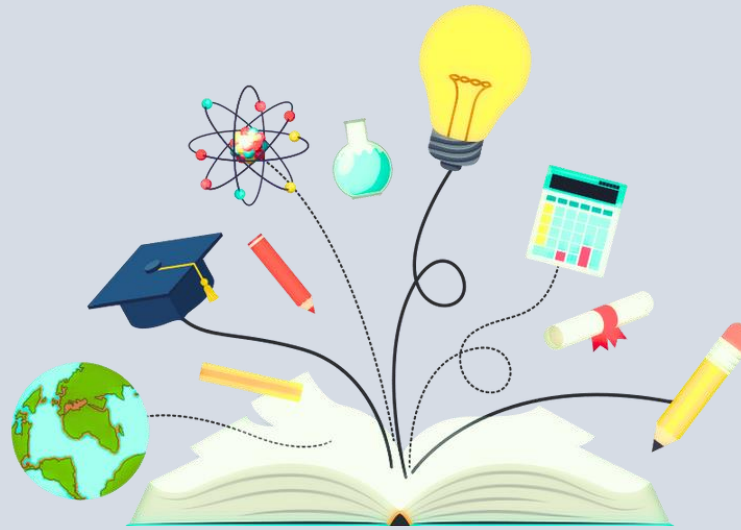
Publications & useful websites

Podcasts & videos, TV and film

University events & competitions

Work experience & Volunteering

Book recommendations



An online resource to be used in school and at home, when traveling, exercising, or doing jobs that signposts thousands of free activities and provides the opportunity for individual bespoke exploration and an opportunity to reflect upon these activities within your account,

[www.mysupercurricular.co.uk](http://www.mysupercurricular.co.uk)

# Unifrog in both years

[ABOUT](#)[BLOG](#)[EVENTS](#)[CASE STUDIES](#)[JOBS](#)[CONTACT](#)[SIGN IN](#)

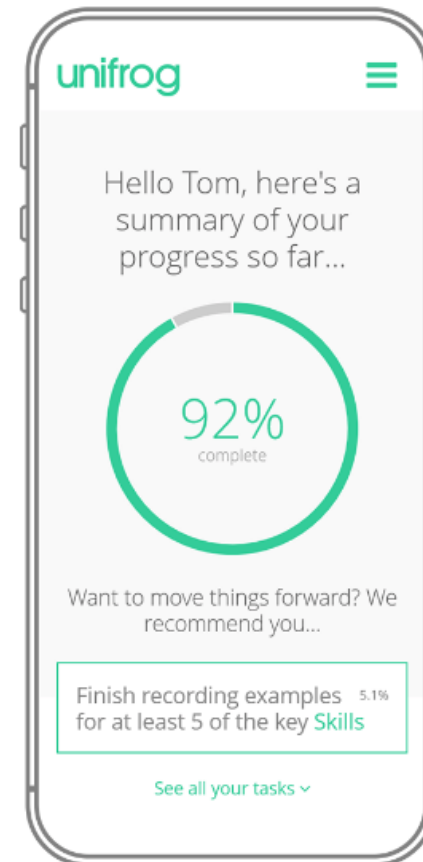
## The **universal** destinations platform.

We help students compare every university, apprenticeship, and Further Education course to apply successfully.

We also empower teachers and counsellors to manage the progression process effectively.

[Request demo](#)

Parental  
login code  
GEDGfamily



# The VLE & LRC

The screenshot displays a VLE interface for Blessed George Napier School. The top navigation bar is purple and contains the school name, the user 'Mrs S O'Donnell', and a profile icon. A left-hand sidebar includes icons for home, folders, security, a plus sign, search, notifications, help, and a refresh button. The main content area is titled '6th form independent work' with a sub-header 'improve your grades extension work'. It features an 'Add' button and a breadcrumb trail 'BGN » 6th form independent work'. Below this is a grid of folders, each with a checkbox and a folder icon. The folders are arranged in four rows: Row 1 contains 'Back', an upload area, 'Art', 'Biology', 'Business Studies', and 'Chemistry'; Row 2 contains 'Drama', 'English Language', 'English Literature', 'Extended Project', 'French', and 'Geography'; Row 3 contains 'History', 'Maths', 'P-E', 'Physics', 'Polish', and 'Psychology'; Row 4 contains 'Religious' and 'Spanish'. The 'Back' button is a green circle with a white left arrow. The upload area is a light blue box with a dashed border and a mouse cursor icon, containing the text 'Drag and drop files here to upload'.

Blessed George Napier School

Mrs S O'Donnell

6th form independent work

improve your grades extension work

+ Add ▾

BGN » 6th form independent work

Back

Drag and drop files here to upload

Art

Biology

Business Studies

Chemistry

Drama

English Language

English Literature

Extended Project

French

Geography

History

Maths

P-E

Physics

Polish

Psychology

Religious

Spanish



# no financial barrier to learning

## 16-19 Bursary

Please see documents regarding applications for bursaries and how to apply.

**16-19 Bursary Letter to  
Parents**

**DOCX**



**Discretionary Bursary**

**DOCX**



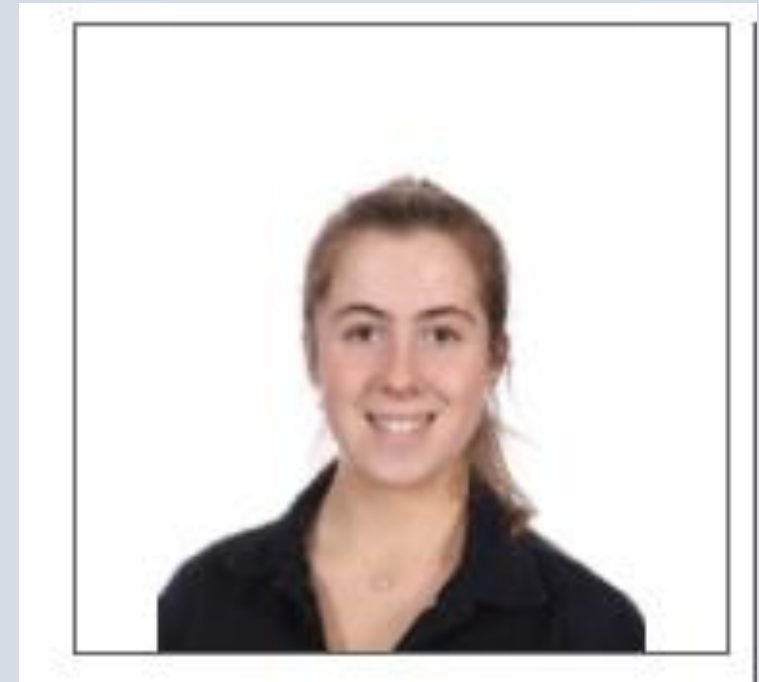
**Free School Meals  
Bursary**

**DOCX**

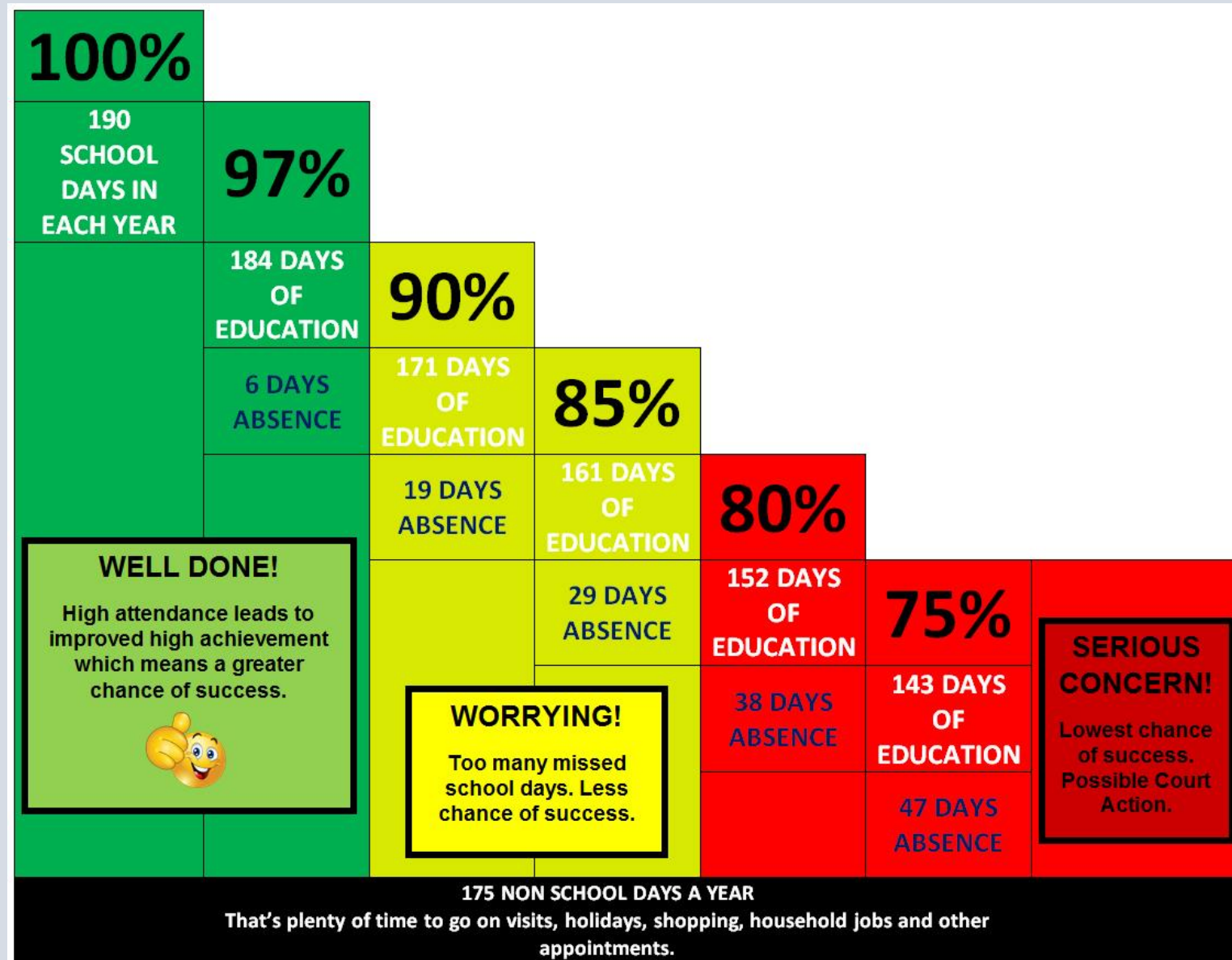


**Vulnerable Student  
Bursary**

# Words of Wisdom from those who have been in your shoes



# Students have to ... be here and be on time.




Students have to... have Growth Mindset

“Whether you  
**think you can**  
or think you can’t  
**you’re right**”

Henry Ford



YOU **BRAINS**   
have in your head. You have  
**FEET** <sup>in</sup> your **SHOES**  
You can steer yourself  
any direction **YOU**  
**CHOOSE...**



# Students have to ... be prepared to do the time and the work!

Level 3 qualifications are hard!

Being a KS5 student is a full time job!

360 guided learning hours per subject

High achieving students do between 16-25 hours independent study a week on top of their lessons

For every taught lesson, aim to do at least an hour extra before and/or afterwards to prepare, read, note take, consolidate & do homework

Study periods are part of these hours

You have 175 non school days in a year

# Students have to: Work with us

MEG (Minimum expected grade)



Regular assessment



Feedback Action Response



After school catchup opportunities



Resitting assessment if necessary



If you fail to prepare, you are preparing to fail.  
Y13 Early assessment week: w/b Monday 25<sup>th</sup> Sept.

