



Compassion

Respect

Truth

Service

Forgiveness



Welcome Parents and Students

Year 9 Information & Expectation Evening 2025



Expectation is the springboard of
achievement.

— *Ngaio Marsh* —

AZ QUOTES

“A hub of faith and learning with Christ at its centre”



Compassion

Respect

Truth

Service

Forgiveness



The purpose of this evening is...

- to go through key events this year.
- highlight the importance of study and what it should look like.
- to give some advice about how students can be supported.

“A hub of faith and learning with Christ at its centre”



Compassion

Respect

Truth

Service

Forgiveness



How can we achieve this?



“A hub of faith and learning with Christ at its centre”



Compassion

Respect

Truth

Service

Forgiveness



Success happens when we all work together.

Student



“A hub of faith and learning with Christ at its centre”



Compassion

Respect

Truth

Service

Forgiveness



Year 9 Plan

- **Where are we now?**
- **Where are we going?**
- **What's the easiest route?**



“A hub of faith and learning with Christ at its centre”



Compassion

Respect

Truth

Service

Forgiveness



Lots to Celebrate

Our overall GCSE results in 2025 were:

- 71% of students achieved at least a standard pass (Grade 4 or above) in both English and Mathematics.
- 76% of all grades were grade 4 or above

“A hub of faith and learning with Christ at its centre”



Compassion

Respect

Truth

Service

Forgiveness



Lots to Celebrate

Our overall A'Level Results were:

42% of A-level Grades were at A*-B

23% of grades at A*-A.

Our students are now embarking on the next stage of their lives.

58 out of 65 students gaining their first choice university place.

University courses including Cybersecurity and Marketing at Aston University, Aerospace Engineering at Bristol University, Pharmacy at Birmingham University, Mechanical Engineering at Liverpool University, Psychology at the University of Nottingham.

As well as higher education we also have students moving onto Degree Apprenticeships in Quantity Surveying and with the Merchant Navy.

"A hub of faith and learning with Christ at its centre"



Compassion

Respect

Truth

Service

Forgiveness



GCSE Courses and Structure

- 4 Core Subjects – English, Maths, Science and RE.
- 3 Optional Subjects.
Students are not allowed to drop any subjects. They are working all the way through to their GCSEs at the end of Y11.
- The majority of courses are now 100% exam with few that still have Non-examined assessment (speaking and listening, oral presentations, practical work, coursework).
- Some courses are tiered into Higher and Foundation. Other courses have everyone doing the same exam.

“A hub of faith and learning with Christ at its centre”



Compassion

Respect

Truth

Service

Forgiveness



GCSE Options

- **Art**
- **Photography**
- **Business Studies**
- **Computer Science**
- **Drama**
- **D&T – Product Design**
- **D&T – Textiles**
- **D&T – Food Technology**
- **French**
- **Geography**
- **History**
- **Music**
- **Physical Education**
- **Polish**
- **Spanish**
- **Statistics**
- **iMedia**
- **Childcare**
- **Construction**

- **English Language**
- **English Literature**
- **Science**
- **Maths**
- **Core PE**
- **RE**

“A hub of faith and learning with Christ at its centre”



Compassion

Respect

Truth

Service

Forgiveness



GCSE Options

- September: information about the options process in PSHE
- December: student straw poll to establish thoughts
- 22nd January: Springboard day with students and staff
- 5th February: Year 9 Parents Evening
- 26th February: Options evening
- 6th March: Option Form Completion
- March-June: Construction of the timetable
- June: Final confirmation of option choices

“A hub of faith and learning with Christ at its centre”



Compassion

Respect

Truth

Service

Forgiveness



Conversations

- Thoughts on a career path
- Are there any subjects that would be needed for university?
- Progress in subjects?
- What does KS4 look like for that subject?
- Favourite subjects
- What help do they need?

“A hub of faith and learning with Christ at its centre”



Compassion

Respect

Truth

Service

Forgiveness



Conversations

- www.UCAS.com
- www.apprenticeships.gov.uk
- www.careerpilot.org.uk
- www.careersbox.co.uk
- www.eclips-online.co.uk LOG IN: **piopha21**

“A hub of faith and learning with Christ at its centre”



Compassion

Respect

Truth

Service

Forgiveness



PSHE

Delivered twice weekly by tutors during form time and 1 hour a fortnight

Term 1	Term 2	Term 3	Term 4	Term 5	Term 6
Relationships	Health and wellbeing	Living in the wider world	Relationships	Health and wellbeing	Living in the wider world
Healthy relationships	Healthy lifestyles	Proactive vs reactive	Careers	Healthy lifestyles	Self respect
Bullying	Self esteem		Marriage	Happiness	Respect for the environment

“A hub of faith and learning with Christ at its centre”



Compassion

Respect

Truth

Service

Forgiveness



Key Dates for Year 9

Progress and Reports

Progress Report 1
(November 2025)

Progress Report 2
(January 2026)

Progress Report 3
(July 2026)

Y9 Parents Evening
(2th February 2026)

Dates
for your



“A hub of faith and learning with Christ at its centre”



Compassion

Respect

Truth

Service

Forgiveness



Students must...

follow school expectations

As role models within the school, standards must be high which starts with uniform, punctuality, attendance, behaviour and positive attitude to learning.

"A hub of faith and learning with Christ at its centre"



Compassion

Respect

Truth

Service

Forgiveness



Behaviour for Learning

Compassion

Respect

Truth

Service

Forgiveness

Behaviour for Learning at BGN "I am..."

'Ready' to Learn

- Arrive to lessons on time
- All essential equipment
- In full correct uniform at all times of the day



'Responsible'

- Follow instructions, first time every time
- Focused and working to the best of my ability
- My phone is Never Seen, Never Heard



'Respectful' of all

- Demonstrate the Gospel Values in all that I do
- Listen and respond to others politely
- Create a safe environment



What happens if I am not

Ready, Responsible or Respectful:

- A warning is given to make things right.
If that doesn't work or the problem continues...
- You will be directed to work in another room to reset or possible isolation.
- You will complete a student-staff reflection sheet at break/lunch.



"A hub of faith and learning with Christ at its centre"



Compassion

Respect

Truth

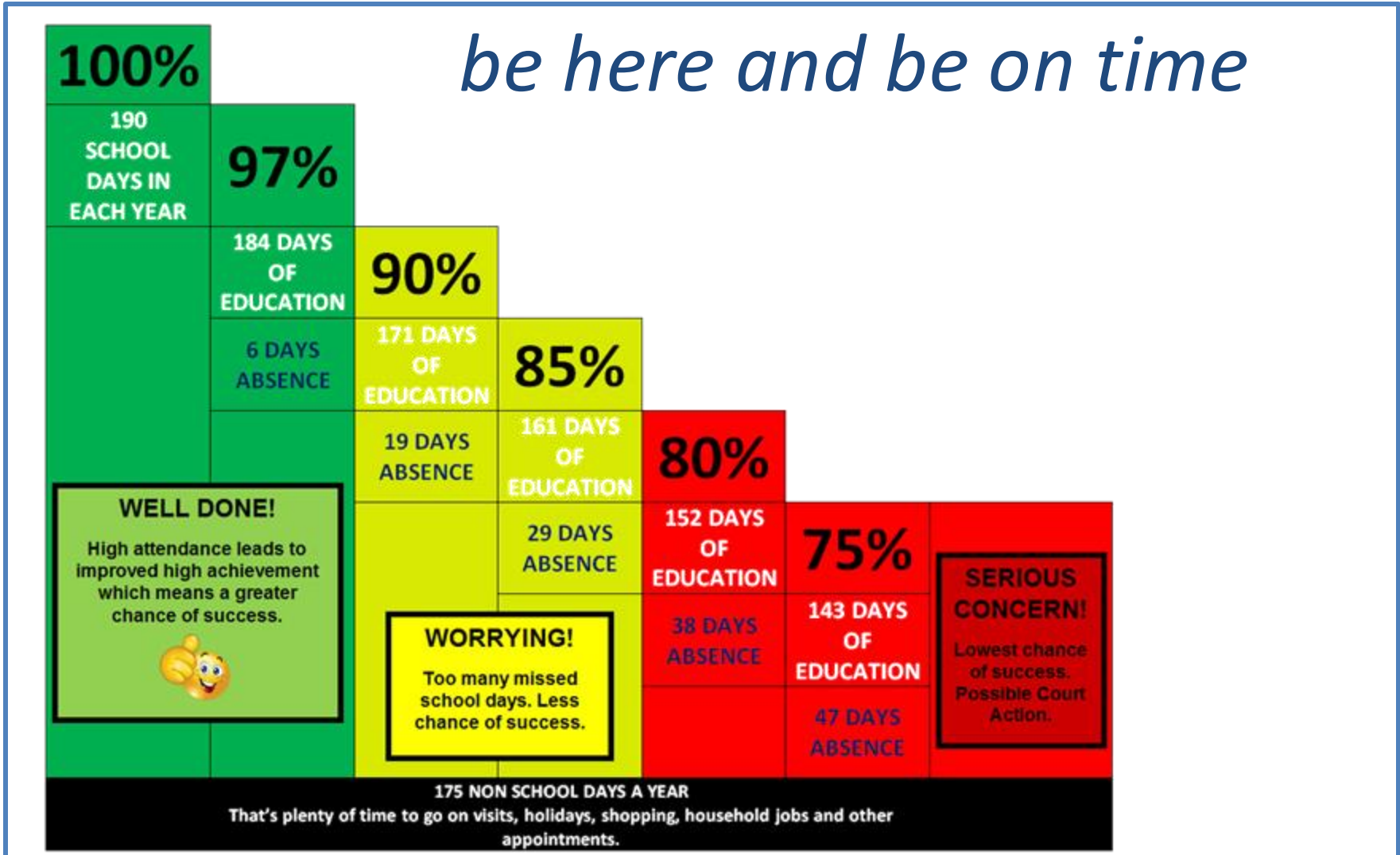
Service

Forgiveness



Students must...

be here and be on time



“A hub of faith and learning with Christ at its centre”

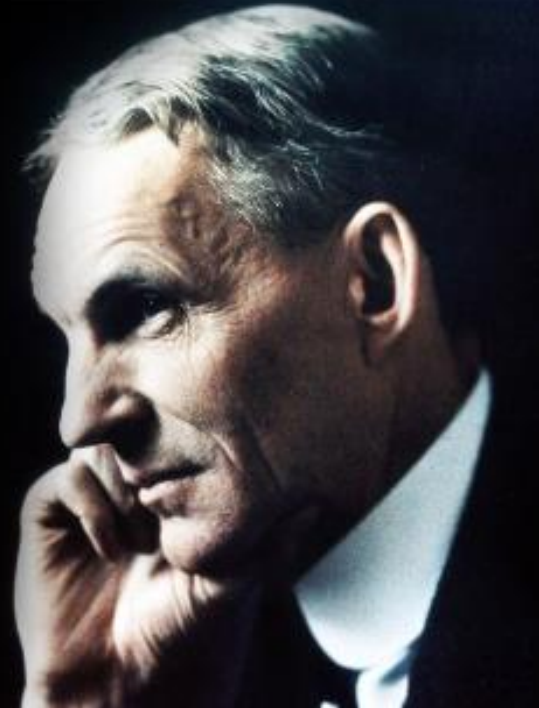


Students must...

have a growth mindset

“Whether you
think you can
or think you can’t
you’re right”

Henry Ford



“A hub of faith and learning with Christ at its centre”



Students must...

be prepared to do the time and the work!

Preparation for GCSEs
can be challenging

High achieving students
do between 1.5 – 2 hours
independent study a
night on top of their
lessons

For every taught lesson,
aim to do at least ½ hour
extra to prepare, read,
note take, consolidate &
do homework

Making the right choices
can keep doors open at
16 and 18



Students must...

work with us

MEG (Minimum expected grade)

Regular assessment

Feedback Action Response

Study support catchup opportunities

Resitting assessment if necessary

“A hub of faith and learning with Christ at its centre”



Compassion

Respect

Truth

Service

Forgiveness



Students must...

be organised and prepared

If you fail to prepare, prepare to fail!

Come fully equipped.

Subjects will have specific requirements and equipment – bring it to school. (Art, P.E., etc.)

Maximise school hours – everything you do here means less to do at home!

“A hub of faith and learning with Christ at its centre”



Compassion

Respect

Truth

Service

Forgiveness



How can I help my child?

- ✓ Create a quiet place to do homework away from distractions.
- ✓ **Check your child's planner every week – see if homework is being written down.**
- ✓ Encourage regular revision – set up a revision timetable.
- ✓ Encourage your child to do independent study over and above the homework that is formally set.
- ✓ Utilise the Learning Resource Centre (LRC)

"A hub of faith and learning with Christ at its centre"



Compassion

Respect

Truth

Service

Forgiveness



What is the VLE?

All students have their own logins.
Homework is largely set via the VLE.

<https://bgn.fusionvle.com>

- Access to resources, revision materials, notes, tasks
- Load and save school work
- Accessed on any device



Blessed George Napier
Catholic School & Sixth Form
A Specialist Sports College

Compassion | Respect | Truth
Service Forgiveness

> Sign in

“A hub of faith and learning with Christ at its centre”



Compassion

Respect

Truth

Service

Forgiveness



What do I do?

- Your biggest asset are the teachers that teach you
- Meet deadlines – regularly seeing your teachers for feedback will only help you.
- Little and Often.
- Catch up on work you've missed...
- Take pride in your work and gain success for yourselves

"A hub of faith and learning with Christ at its centre"

Compassion

Respect


Truth

Service

Forgiveness



Thank you

You **BRAINS** 
have in your head. You have
FEET ⁱⁿ your **SHOES**
You can steer yourself
any direction **YOU**
CHOOSE....



"A hub of faith and learning with Christ at its centre"